

# Zero Waste Live!

16 June 2020 - 02.00 p.m. CEST

## DEPOSIT RETURN SYSTEMS (DRS) FOR BEVERAGE CONTAINERS



**Gerard Bellet**

Founder of Jean Bouteille



**Jean  
Bouteille**



# DEPOSIT RETURN SYSTEMS

FOR BEVERAGE CONTAINERS





# A ZERO-WASTE WORLD

« To create a zero waste society, by promoting the reuse of packaging, bulk consumption, and good food for all »

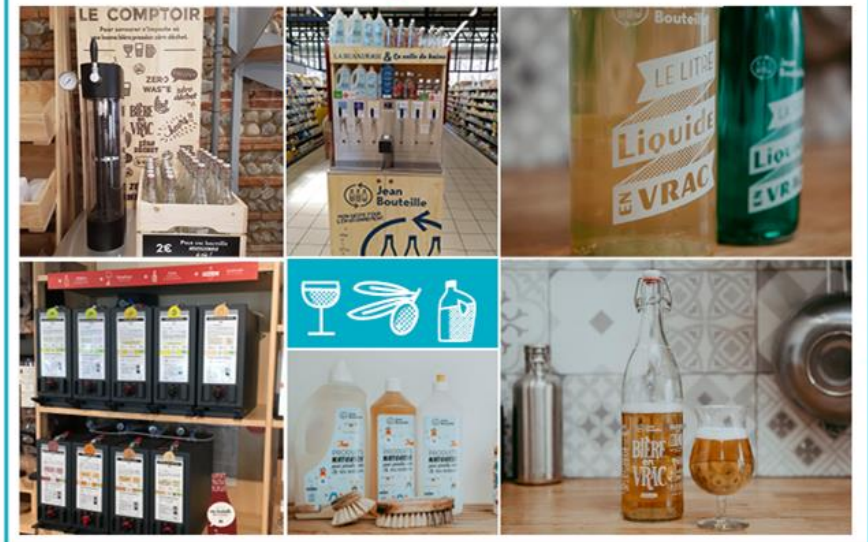




# Jean Bouteille



## REFILL LIQUID STATION



## LIQUIDS



## REUSABLE AND RETURNABLE BOTTLES

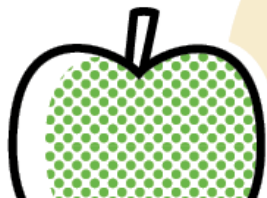


# JEAN BOUTEILLE 2020

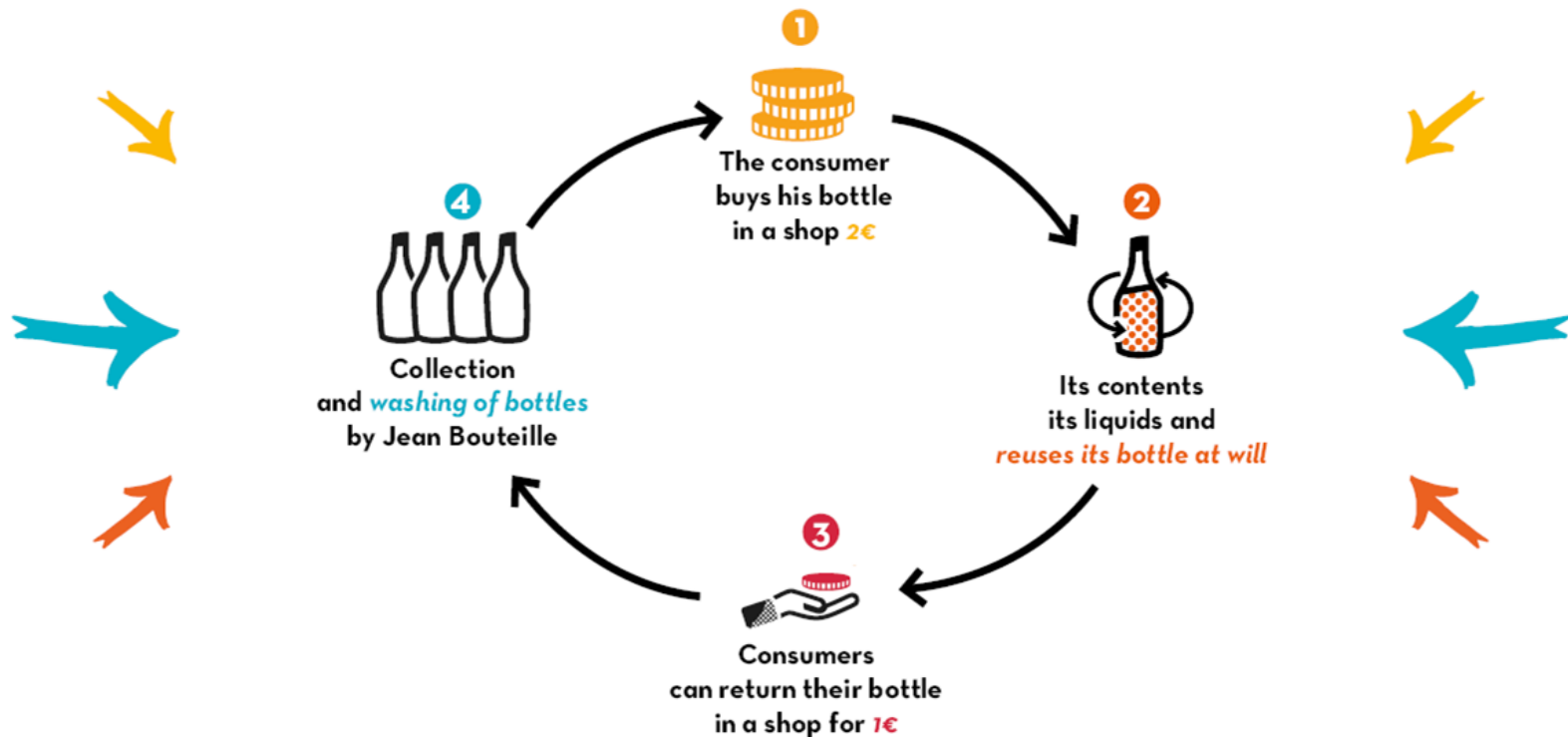
6  
YEARS'  
EXPERIENCE

30  
EMPLOYEES

700  
PARTNER  
SHOPS



# ENCOURAGING PRODUCT *REUSE BY CITIZENS*







# EFFICIENCY OF DEPOSIT RETURN SYSTEM




« The total of non-returnable glass bottles, corresponding to household consumption of beverages, is approximately 28 kg/capita/year in 2013. Single-use jars and bottles represent approximately 6.5 kg/inhabitant/year of single-use glass per inhabitant. »

(ADEME, 2013, Emballages ménagers Key figures)



 **Environmental  
benefits**

 **Economic  
benefits**

# ACTIONS THE MUNICIPALITIES TO IMPLEMENT THE LOCAL DRS

*Supporting local initiatives  
to promote development*

